

# Bridge DATA: Coral Snapshots

[http://www2.vims.edu/bridge/DATA.cfm?Bridge\\_Location=archive1109.html](http://www2.vims.edu/bridge/DATA.cfm?Bridge_Location=archive1109.html)

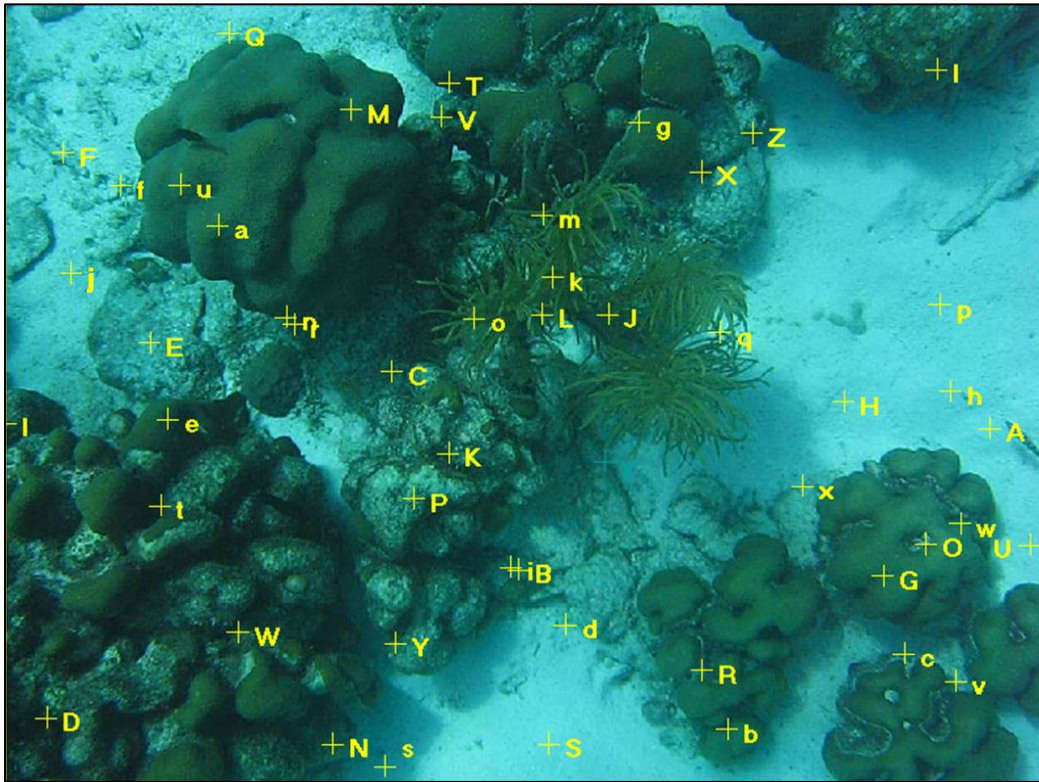


Figure 3. Snapshot of a portion of Site 1000 Steps (shallow). Credit: N. Relles

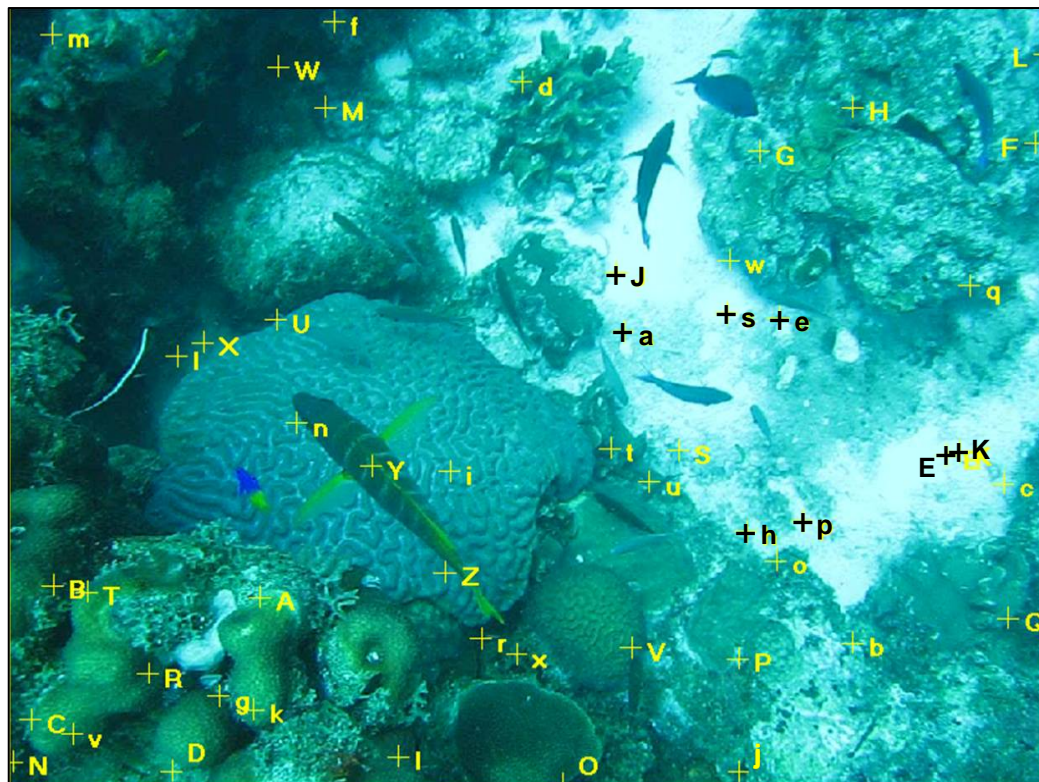


Figure 4. Snapshot of a portion of Site 1000 Steps (deep). Credit: N. Relles